

# Hellidon Village Show 2018

*Vegetables, Flowers, Floral Art, Crafts & Home Produce Show*

**Saturday, 11th August**

**Hellidon Village Hall**

**Come and join in the fun. Why not enter? See the back of the schedule for what to do.**

**It couldn't be easier. Come along in the afternoon and see the Show.**



**Tea and cakes available**

**Doreen Hillier-Bird will have plants for sale.**

**Edible Weeds – Doreen will be showing you what weeds you can eat!**

**A display to show the history of the Village School – the John Ball Trust celebrates its 400<sup>th</sup> anniversary**

***The Show opens at 2pm.***

***Admission is £1.00***

***Children come in free.***

***If you've put an entry in the Show then admission is free in the afternoon***

***The raffle and proceeds are in aid of the Village Hall***

## VEGETABLES and FRUIT

1. Collection of Vegetables in a box, minimum 3 kinds.
2. 5 Tomatoes, all one colour. (To be shown on a plate)
3. A decorative arrangement of at least 3 kinds of cut fresh herbs
4. A basket of at least 3 kinds of salad vegetables
5. A bowl of fruit

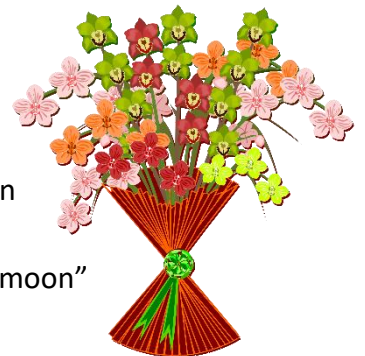


## FLOWERS

6. A vase of mixed flowers cut from your own garden.
7. Sweet Peas, 5 stems, any colour
8. The most fragrant rose.
9. A small vase of roses (any type)
10. One Orchid plant in flower
11. A Pot plant in flower (not an orchid).
12. 1 Individual Foliage Plant
13. A Cactus or Succulent in a pot.
14. 5 Fuchsia blooms arranged in sand or compost

## FLOWER ARRANGING

15. Miniature Flower arrangement, 4 inches maximum in any direction.
16. An Arrangement in a small basket, foliage and flowers must be green
17. A formal flower arrangement measuring not more than 24 x 24 inches including container, the theme is "By the light of the moon"



## ARTS & CRAFTS

18. An item of cross-stitch by exhibitor
19. An item of tapestry by exhibitor
20. An item of embroidery by exhibitor
21. A painting or drawing by exhibitor
22. An item made from wood by the exhibitor

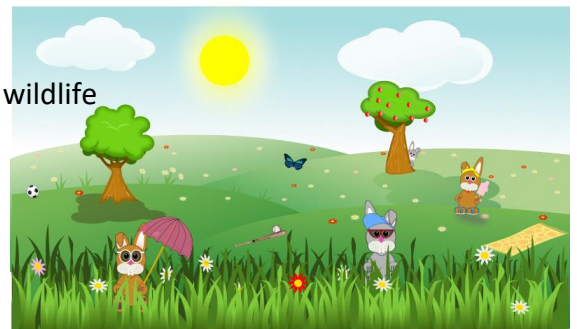
## HOME PRODUCE

23. An Apple Pie
24. 3 Muffins on a plate (any flavour)
25. A handmade Loaf of Bread (Bread Maker not to be used)
26. 1 Jar of Jam \*
27. 1 Jar of Jelly\*
28. 1 Jar of Chutney \*

\*see Rules section for notes

## PHOTOGRAPHIC COMPETITION

29. The subject is "An animal or animals" can be pets or wildlife



### Junior Section (for Pre-school and Primary School Children)

30. Your favourite photograph taken by you
31. An animal or object made from vegetable and/or fruit.

## RULES

All exhibits in classes 1 to 14, to have been grown by the exhibitor for at least 2 months.

Exhibitors should note that any vegetable may be cut open for examination at the discretion of the Judge.

All cakes must be made by exhibitor. All cakes must be covered.

Jars to be labelled with type of Jam/Jelly/Chutney and when date you made it

Jars should have the lid off replaced with clingfilm

Also note that the Home Produce classes may be tasted by the Judges

Entries in class 29 and 30 to be taken by the exhibitor.



Best in Show awarded by the Judges—£5 voucher and Best In Show Certificate

Best in Show Popular Vote—£5 voucher and Best in Show Certificate.

1st, 2nd and 3rd in each class will receive a prize card.

The Junior Class winners will get a prize.

### **Entries are free**

You may enter as many times as you like in each class.

### **How to enter**

Decide which classes you want to enter and how many entries in each you want to make.

You can fill in an entry form when you get to the Hall. Or before Show Day you can email me your name, the class numbers and number of entries and I will fill out the form for you and have your entry cards ready when you arrive at the Hall.

### **Times**

The Hall will be open for you to bring and stage your entries between 9.00am and 11.45am.

The Village Hall will be closed between 12 noon and 2.00 pm to allow judging to take place.

The Show opens to the public at 2.00 pm.

Presentation of Prizes 4.00 pm exhibits can be taken away after this.

Show closes at 4.00 pm.

Show Schedules and entry forms

available from Brita Wood,

The Four Bees, Church Lane, Hellidon

Email: [bw.garden@btinternet.com](mailto:bw.garden@btinternet.com)

